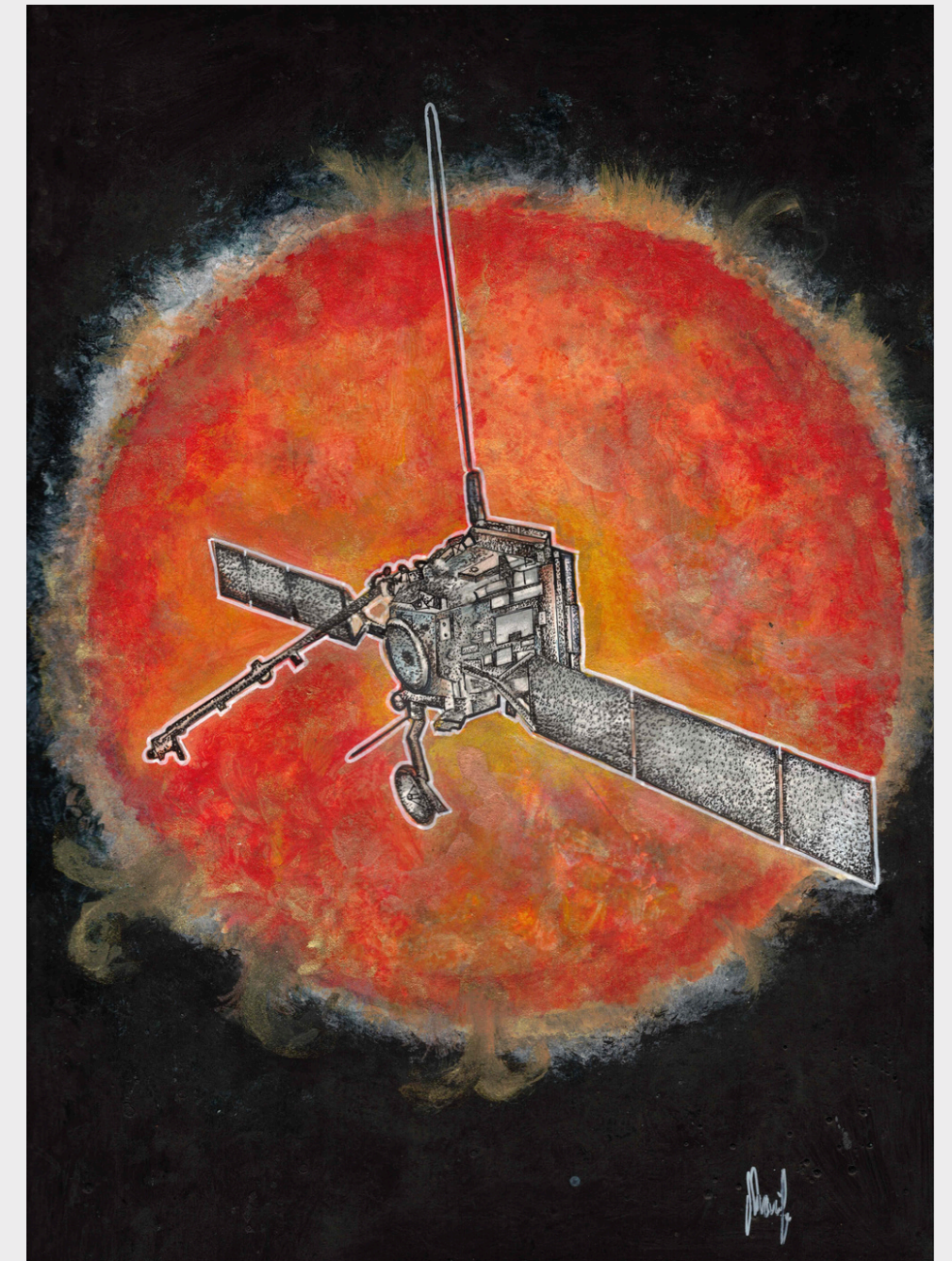
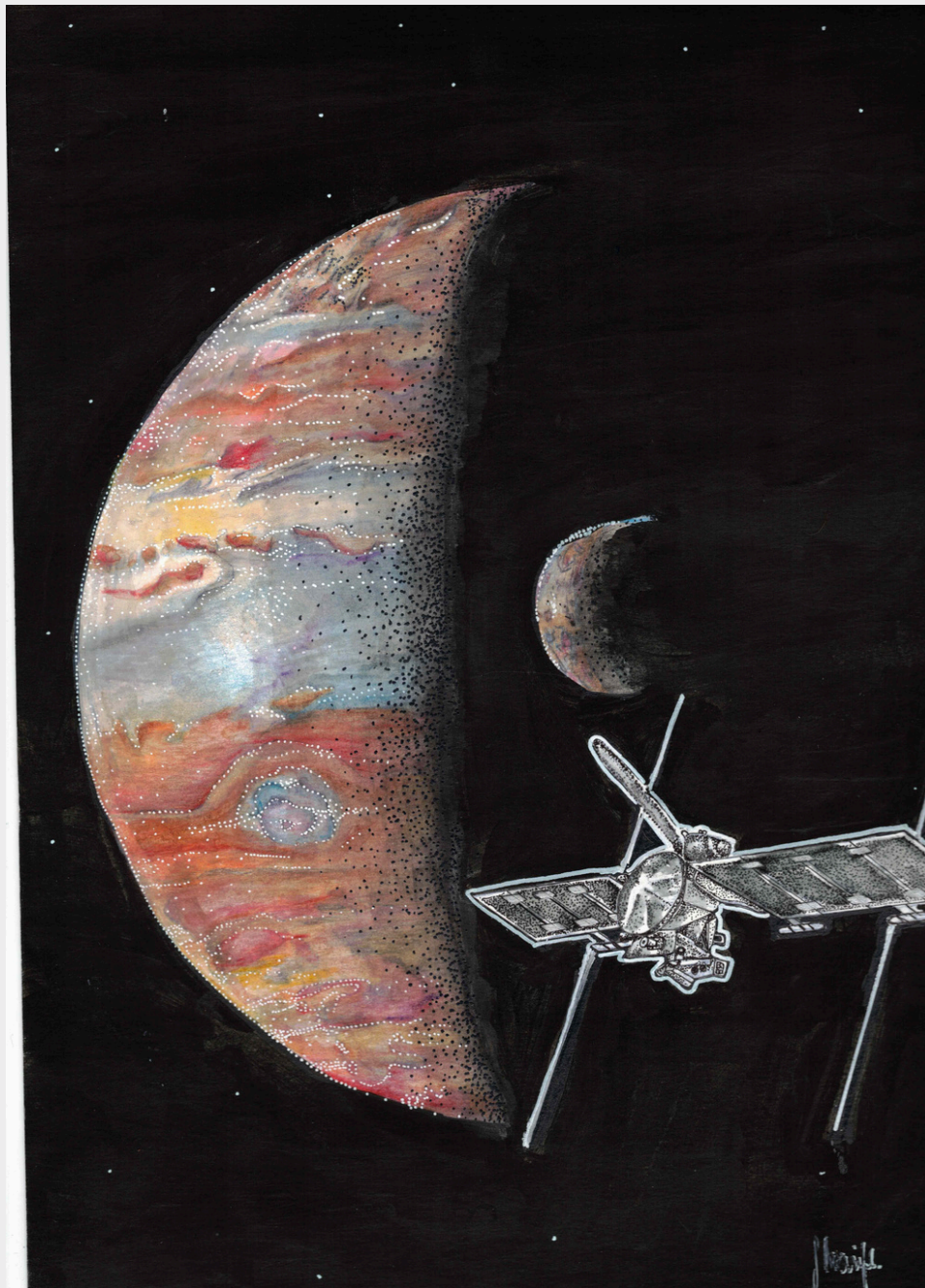


SHARIFE GACEL

Licensed Mental Health Counselor
Analog Astronaut
Astronomy Artist

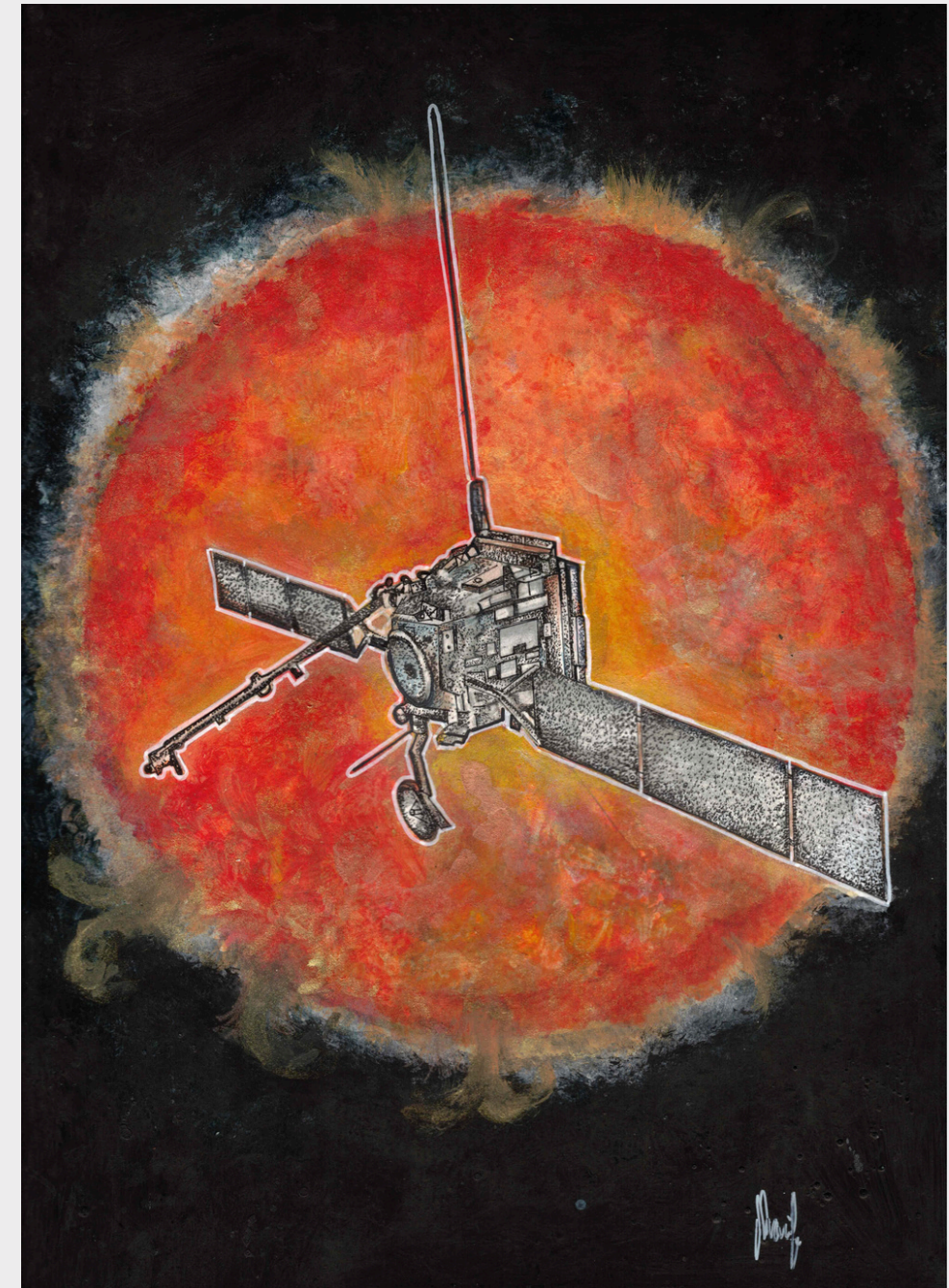
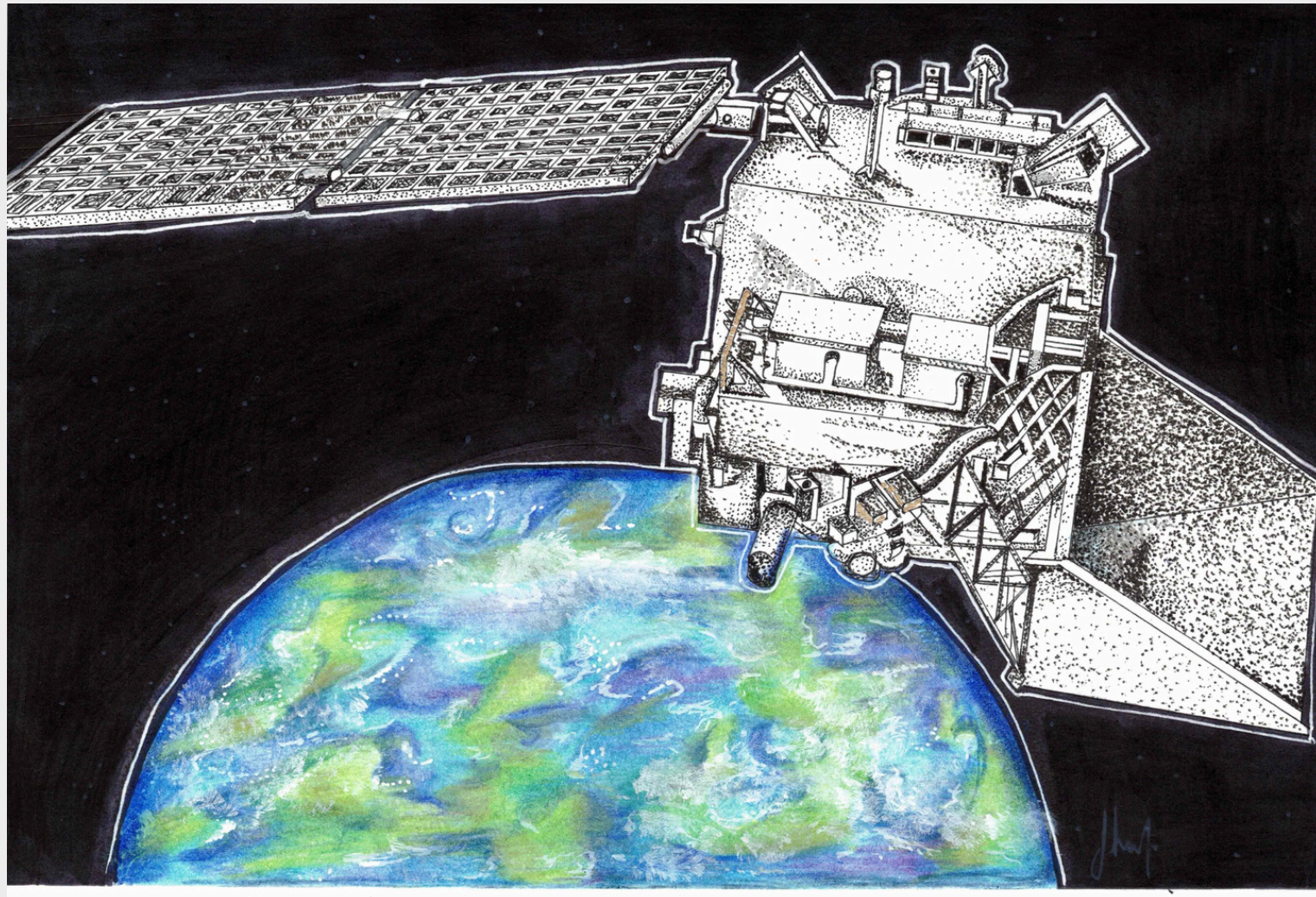


About Me.

Sharife Gacel is an analog astronaut, has 11+ years of experience as a Clinical Therapist, is a Director of a private practice, and is licensed in two states (Florida and Colorado). Her areas of specialty include anxiety, life stage transitions, multicultural issues, and general mental health concerns. She received her Master of Science with honors in Clinical Mental Health Counseling. She also received a Bachelor of Science in Psychology, and a Bachelor of Science with honors in Molecular Biology and Microbiology. Sharife also has an 18-year background in the performing arts and is currently developing an Astronomy Art visual arts series. Sharife has been selected to participate in 8 NASA Social events. She also manages the social media accounts for her adopted greyhounds Anubis and Cosmos to an audience of 25,000+ people worldwide. Sharife is an amateur astronomer, Vice President of a local astronomy club, Divemaster scuba diver, space educator, animal lover, and visual artist. She enjoys watching rocket launches and loves connecting with others about human spaceflight.



EXPLORATION MISSIONS



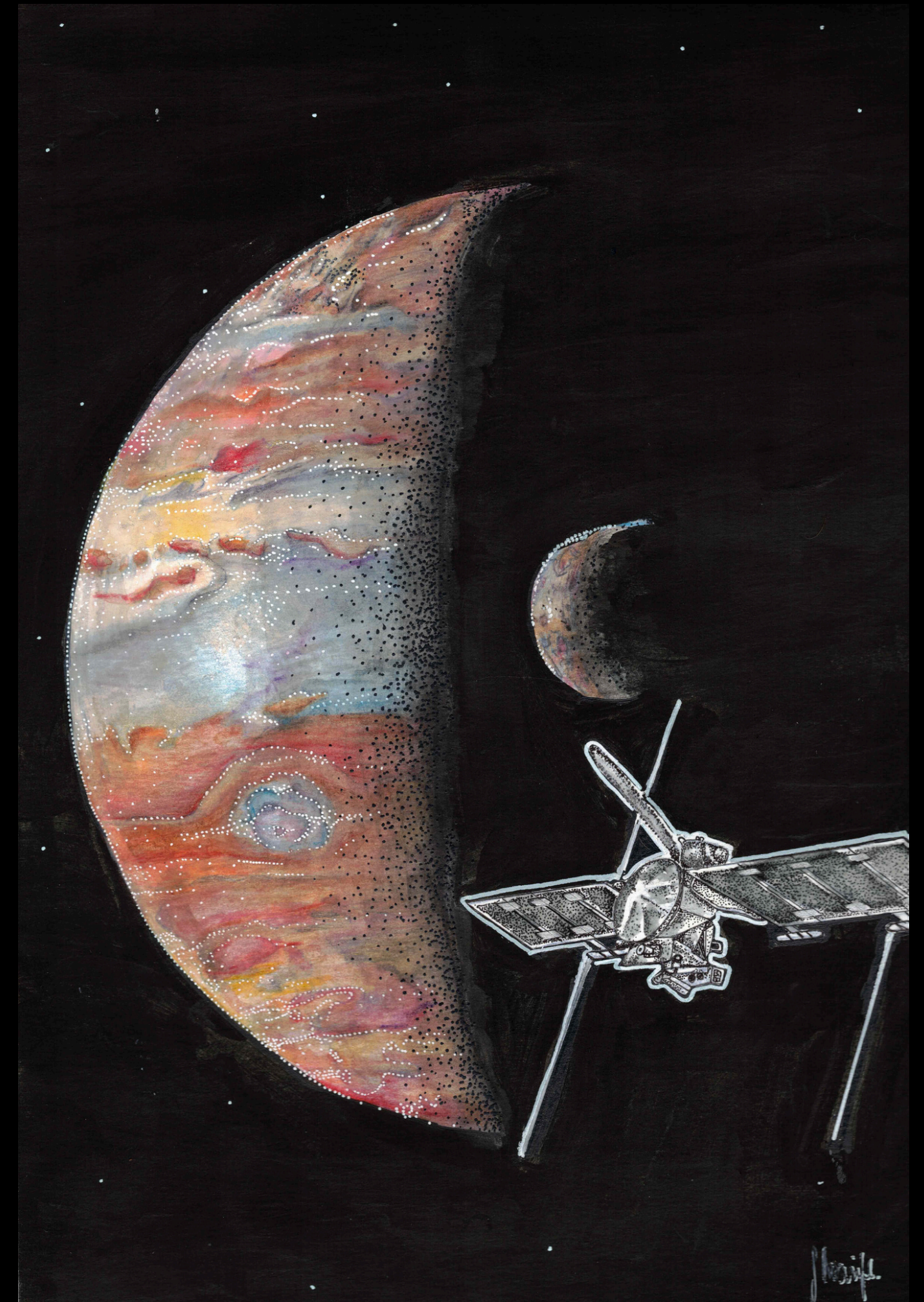
Europa Clipper

Year: 2024

Medium: Mixed Media

Dimensions: 9x12"

Description: The Europa Clipper is an interplanetary mission that is planned to launch in October 2024. This spacecraft is being developed to study Jupiter's Galilean moon, Europa. It's set to launch on a Falcon Heavy rocket and will conduct a series of fly-bys of Jupiter. The primary objectives include; Confirming the existence and character of the nature of water within or beneath the ice, and processes of surface-ice-ocean exchange. Distribution and chemistry of key compounds and the links to ocean composition. Characteristics and formation of the surface features, including sites of recent or current activity. In this piece, Jupiter is featured in the background, with Europa in the middle. The Europa Clipper spacecraft is highlighted in the foreground.



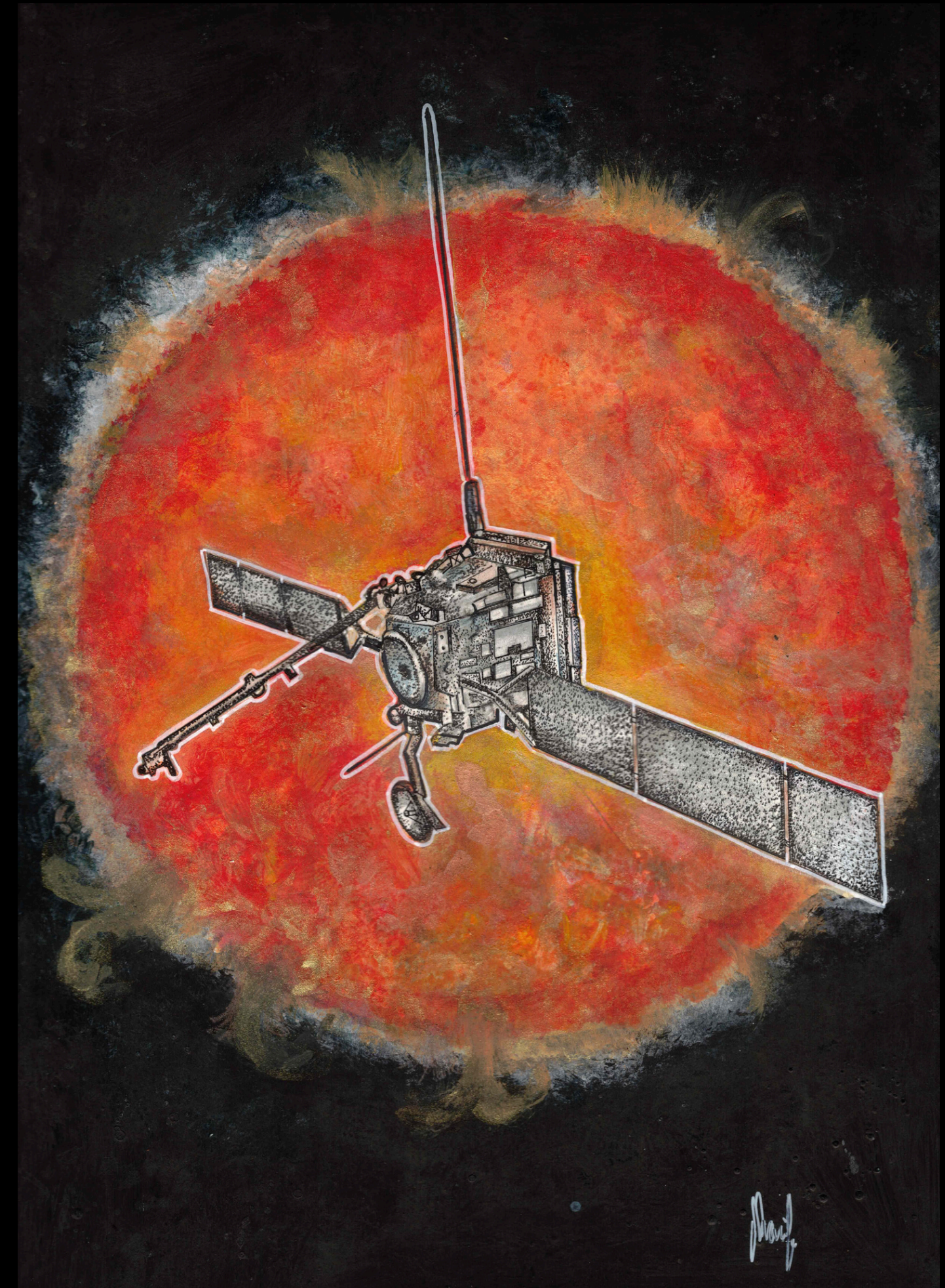
Solar Orbiter

Year: 2023

Medium: Mixed Media

Dimensions: 9x12"

Description: This piece shows the Solar Orbiter satellite and Sun on 9x12" mixed media paper. This illustration showcases this Sun-observing satellite. The Solar Orbiter is an international cooperative mission between the European Space Agency (ESA) and NASA. The primary mission question relates to heliophysics and asking how the Sun creates and controls the giant bubble of magnetized plasma around it. The Solar Orbiter will get as close as 26 million miles to the Sun, which is closer than the orbit of Mercury on the closest approach. The Solar Orbiter launched on a United Launch Alliance, Atlas V rocket on February 9, 2020, from NASA's Kennedy Space Center.



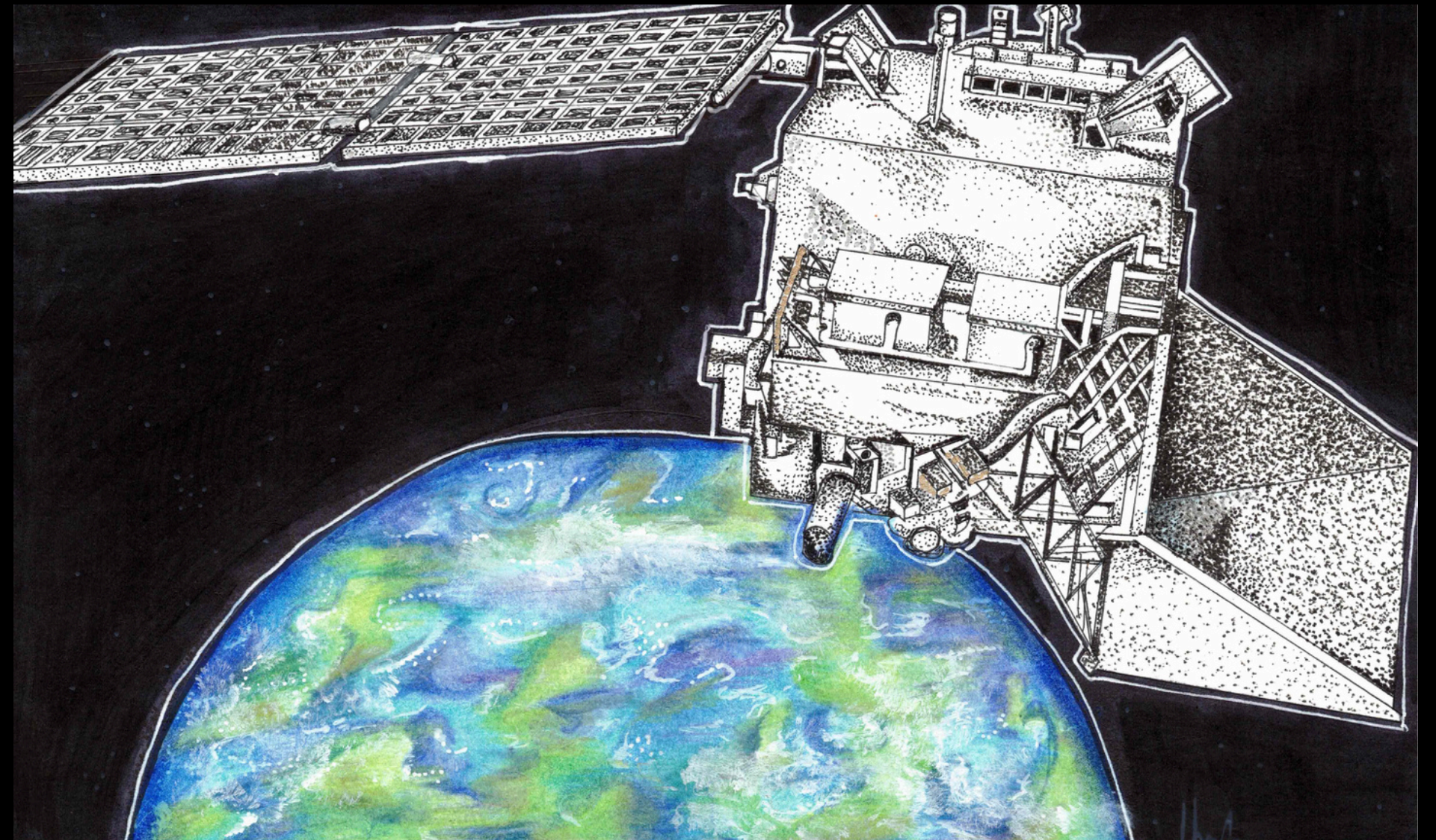
PACE

Year: 2024

Medium: Mixed Media

Dimensions: 5.5x8.5"

Description: The NASA Plankton, Aerosol, Cloud, and ocean Ecosystem (PACE) mission will extend and improve upon NASA's 20+ years of global satellite observations of our living ocean, atmospheric aerosols, and clouds. It will initiate an advanced set of climate-relevant data records. By determining the distribution of phytoplankton, PACE will help assess ocean health. PACE will also continue, and advance key measurements related to air quality and climate. Mission science goals include extending key sea and sky data records for Earth System and climate studies and addressing new and emerging science questions by detecting a broader range of color wavelengths that will provide new and unprecedented detail. This 5.5"x8.5" pen and ink mixed media piece illustrates the PACE satellite orbiting Earth. Earth's surface is illustrated to show the phytoplankton concentrations in the ocean, which this satellite will measure.



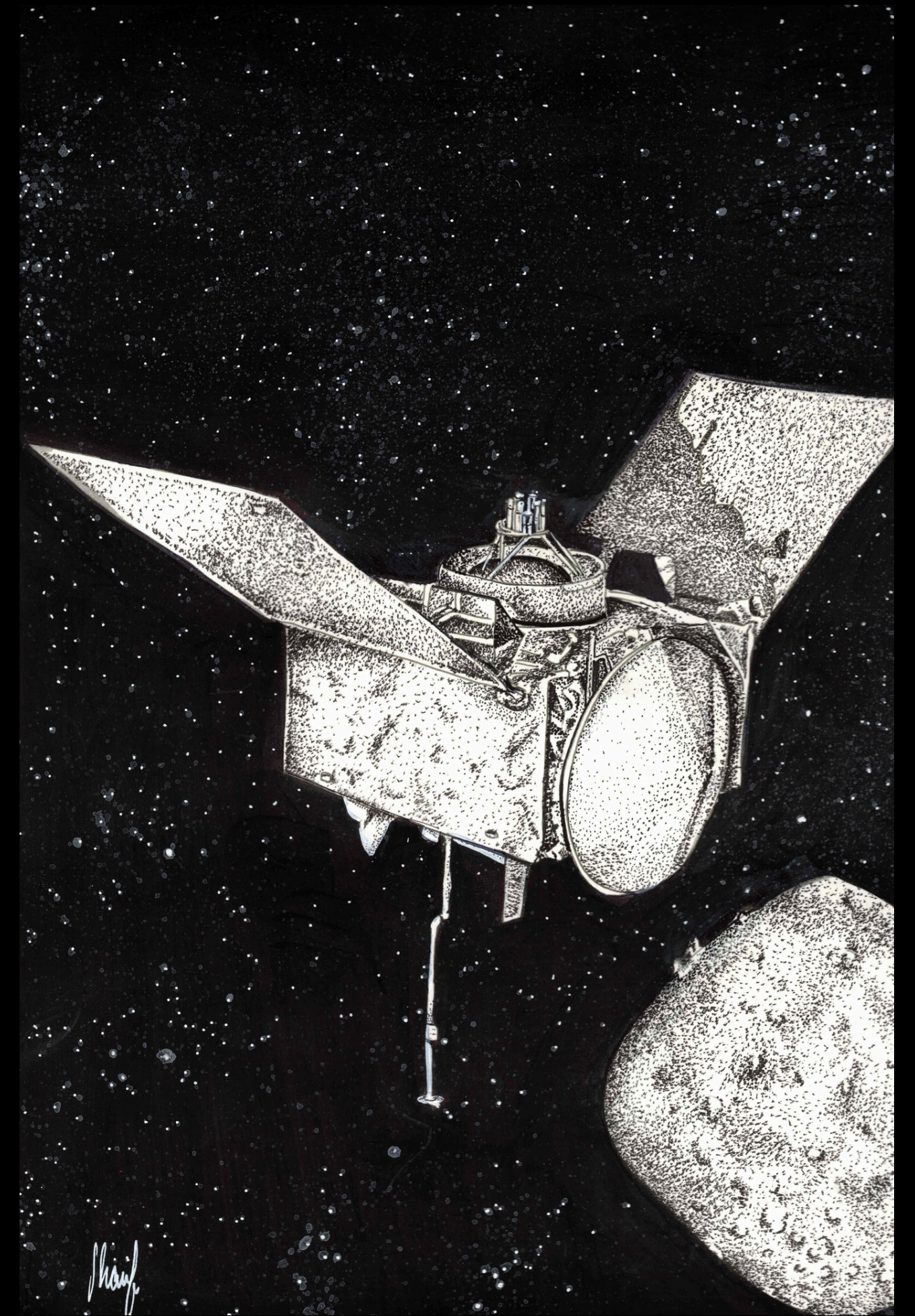
OSIRIS-REx

Year: 2024

Medium: Oil on Canvas

Dimensions: 9x12"

Description: OSIRIS-REx is the first U.S. mission to collect a sample from an asteroid. The sample material the spacecraft collected from the asteroid Bennu, returned to Earth on September 24, 2023. Bennu is a small, near-Earth asteroid that passes close to Earth roughly every six years. The objective of this mission was to collect a sample from this asteroid which will offer clues as to whether asteroids colliding with Earth billions of years ago brought water and other key ingredients for life here. After returning the Bennu asteroid sample to Earth, the OSIRIS spacecraft didn't land on Earth but continued onto a new mission to explore another asteroid, Apophis. The follow up mission is called OSIRIS-APEX. This 9x12" pen and ink illustration shows the OSIRIS-REx spacecraft approaching the asteroid Bennu for the "touch-and-go" sample collection.



73 Ingenuity

Year: 2024

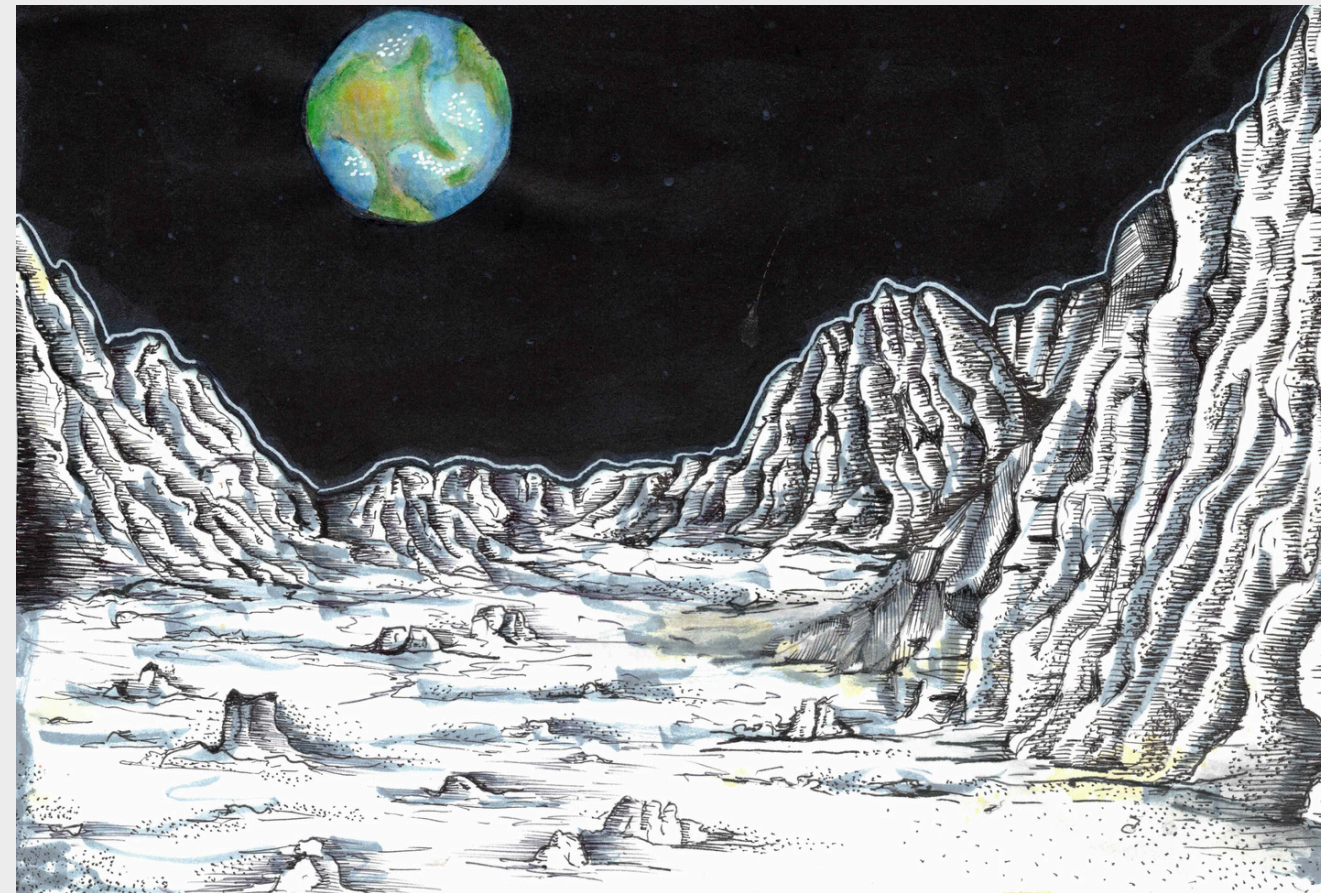
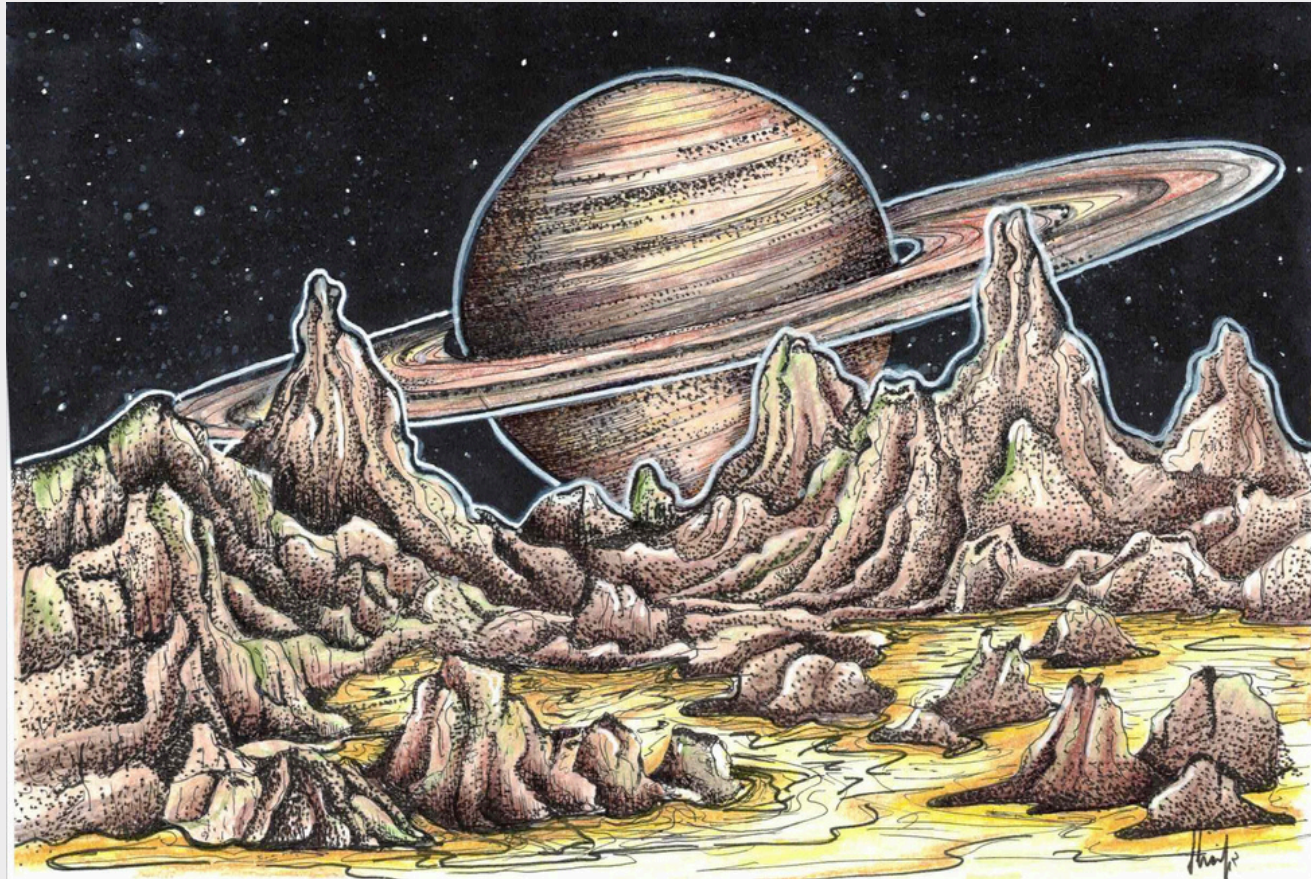
Medium: Pen and Ink

Dimensions: 7x10"

Description: Strapped to the Mars Perseverance rover's belly for the journey to Mars, Ingenuity completed 72 historic flights. This helicopter became the first aircraft to achieve powered, controlled flight on another planet. Ingenuity's first flight was April 19, 2021. The purpose of the mission was to demonstrate flight in the Martian atmosphere. The last flight of Ingenuity was January 18, 2024. This artistic interpretation shows Ingenuity on an imagined 73rd flight over the Jezero Crater on Mars, with the Perseverance Rover in the background. The one white dot in the sky represents Earth and was inspired by an image taken by the Curiosity Rover. Currently Perseverance is still exploring the Martian terrain relaying historic information about Mars to Earth. This image is 7x10", pen and ink, on mixed media paper.



PLANETARY



Earthrise

Year: 2024

Medium: Mixed Media

Dimensions: 9x12"

Description: Earthrise is a photograph of Earth and a part of the Moon's surface that was taken from lunar orbit by astronaut William Anders on December 24, 1968, during the Apollo 8 mission. This illustration showcases this iconic photograph on 9x12" mixed media paper. The significance of this image shows Earth and its beauty, inspiring global environmental awareness. The image is called Earthrise because the Earth literally rose from the surface of the Moon.



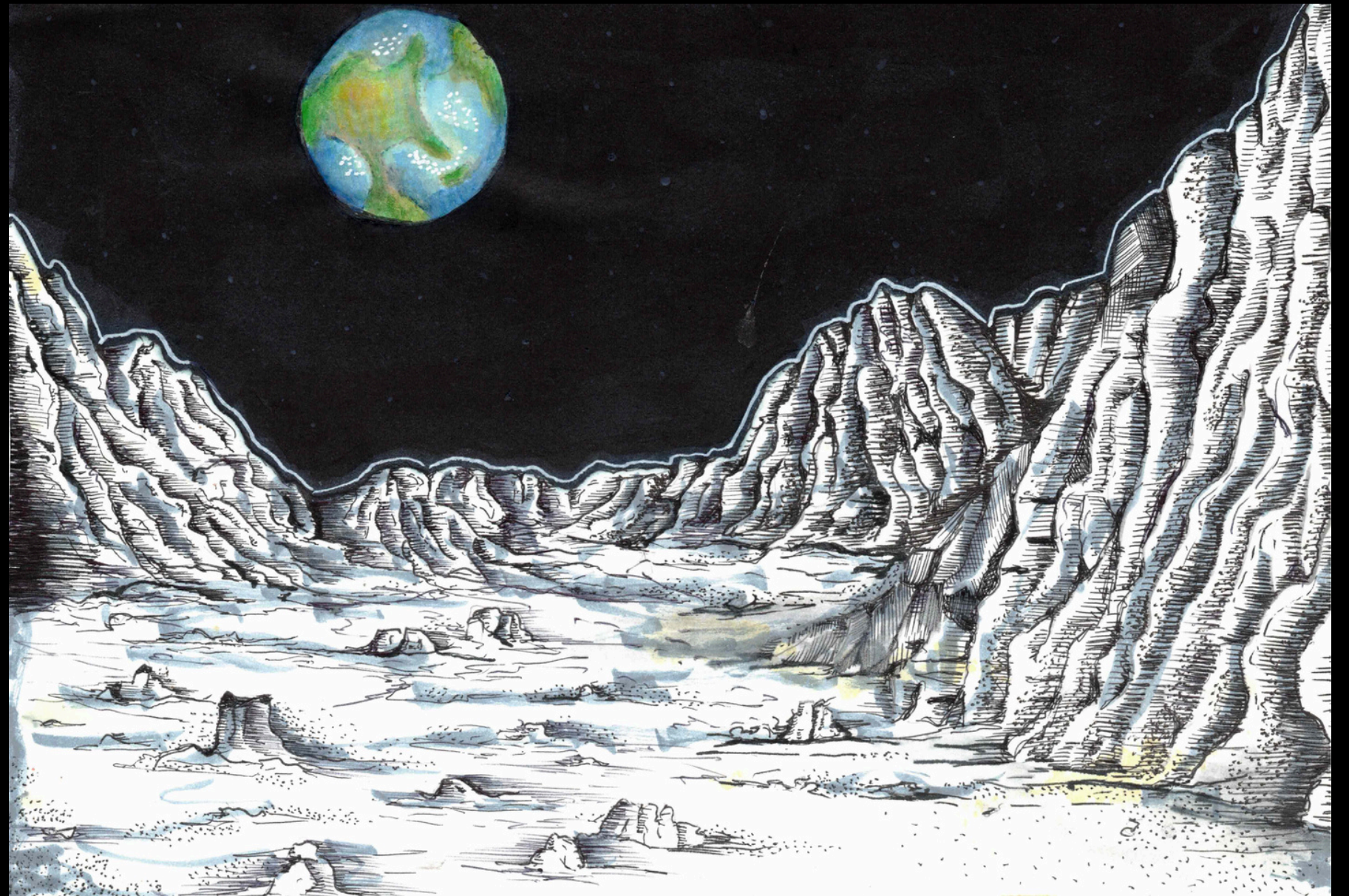
Lunar Surface

Year: 2024

Medium: Mixed Media

Dimensions: 5.5x8.5"

Description: This 5.5x8.5" piece illustrates a possible view of the Earth from the surface of the Moon. The Artemis program will return humans back to the surface of the Moon, landing at the South Pole. The South Pole of the Moon is characterized by mountains, craters, basins, and permanently shadowed regions. In this illustration, the Sun is behind the viewer, which shows the surface and the Earth to be illuminated. Similar to how we have a Full Moon on Earth, those standing on the surface of the Moon might get to witness a Full Earth. No stars are visible in this daytime drawing since the Moon's lack of atmosphere prevents light from spreading out during the day.



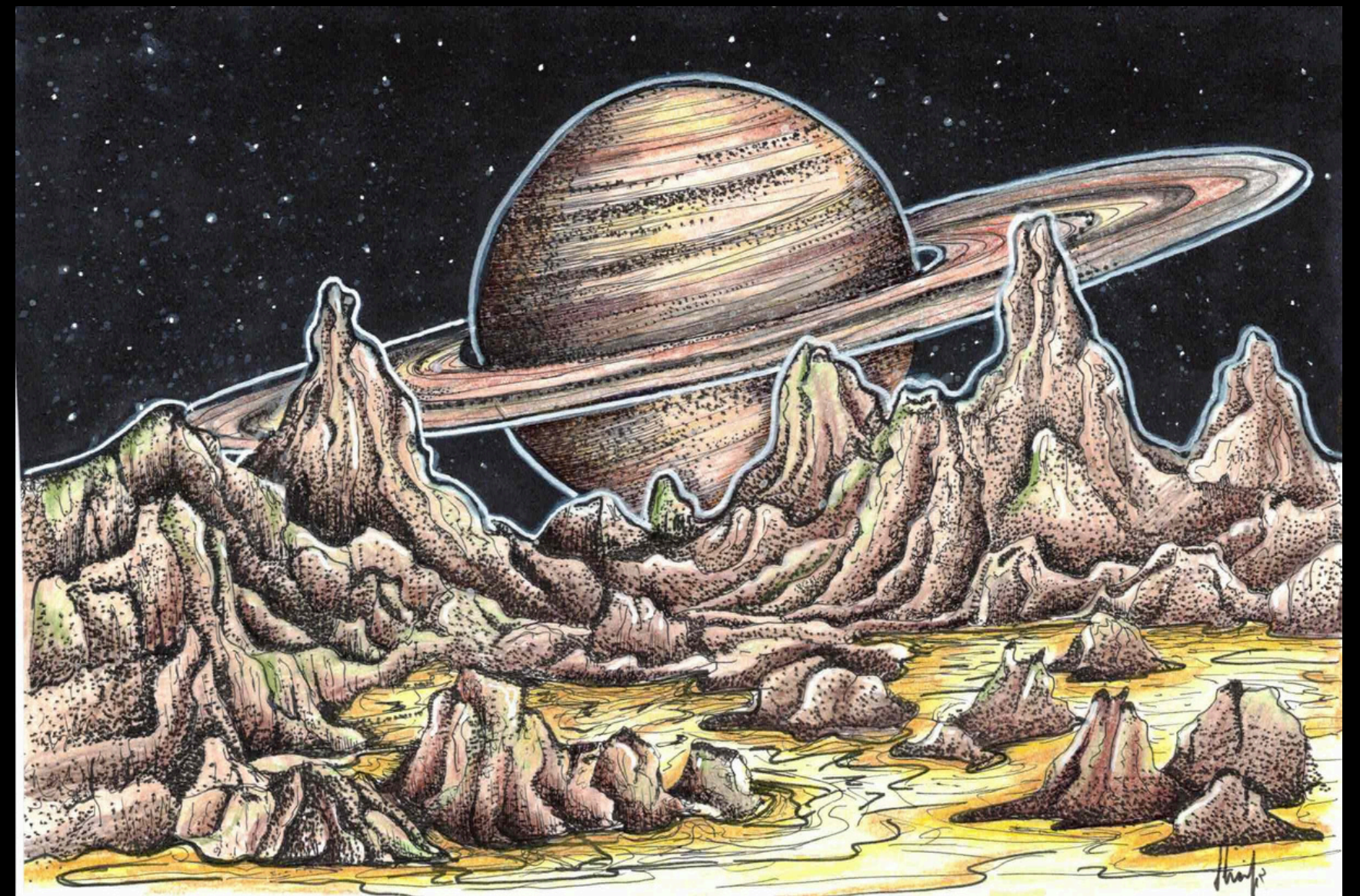
Titan

Year: 2024

Medium: Oil on Canvas

Dimensions: 5.5x8.5"

Description: This image shows what the surface of Titan might be like. Titan is Saturn's largest moon and the second largest in the Solar System. The surface has clouds, rain, rivers, lakes, and seas of liquid hydrocarbons like methane and ethane. Titan has mountainous regions that are named for mountains from J.R.R. Tolkien's Middle-earth. There is a mountain ridge known as Mithrim Montes with an elevation of 10,948 feet. This 5.5x8.5" artistic interpretation shows a view from this mountain range with included methane lake.



Venus

Year: 2024

Medium: Mixed Media

Dimensions: 5.5x8.5"

Description: The surface of Venus is solid and covered in mountains, volcanoes, with expansive volcanic plains and vast, ridged plateaus. Most of the mountains on Venus are volcanic in nature. The surface is very hot and dry with a thick atmosphere that traps heat creating a runaway greenhouse effect. Venus is also permanently shrouded with clouds of sulfuric acid that start with an altitude of 28-43 miles. This 5.5x8.5" mixed media image showcases the sulfuric acid atmosphere at elevation. It also shows an interpretation of the mountainous regions, and volcanic plains.



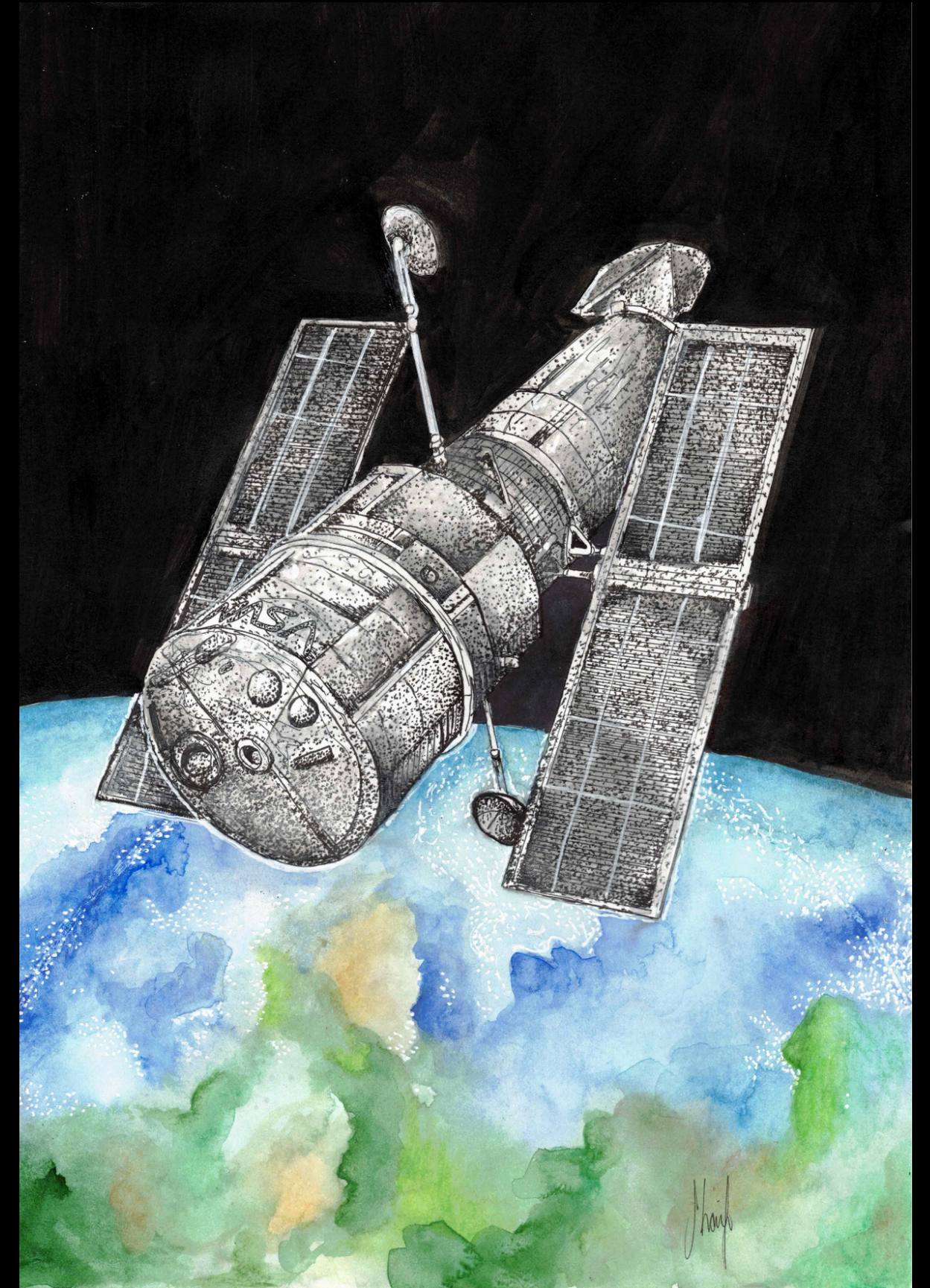
Hubble

Year: 2025

Medium: Mixed Media

Dimensions: 5.5x8.5"

Description: Hubble travels at an incredible speed of about 17,500 miles per hour (28,000 km/h) and orbits at an altitude of 340 miles (547 km). Over its lifetime, Hubble has made more than 1.5 million observations, capturing breathtaking images of galaxies, nebulae, and distant stars. One of its greatest contributions was helping determine the age of the universe—estimated to be about 13.8 billion years! This piece is the iconic Hubble Space Telescope in orbit above Earth. I used a combination of ink and watercolor techniques to bring the scene to life. Hubble Details: I focused on intricate pen work to highlight the structural details of Hubble, like its solar panels, antenna, and cylindrical body. The stippling and linework were designed to create a textured, metallic effect, giving the telescope a tangible, lifelike feel. Earth's Surface: Below Hubble, I used watercolors to depict Earth with soft, flowing blends of blue, green, and sandy tones. I intentionally left out any borders on Earth's surface to reflect the perspective of unity and the interconnectedness of our planet from space. Space Background: The deep black ink surrounding Hubble contrasts sharply with the vibrant Earth below, symbolizing the vastness and mystery of space.



Galilean Quartet

Year: 2025

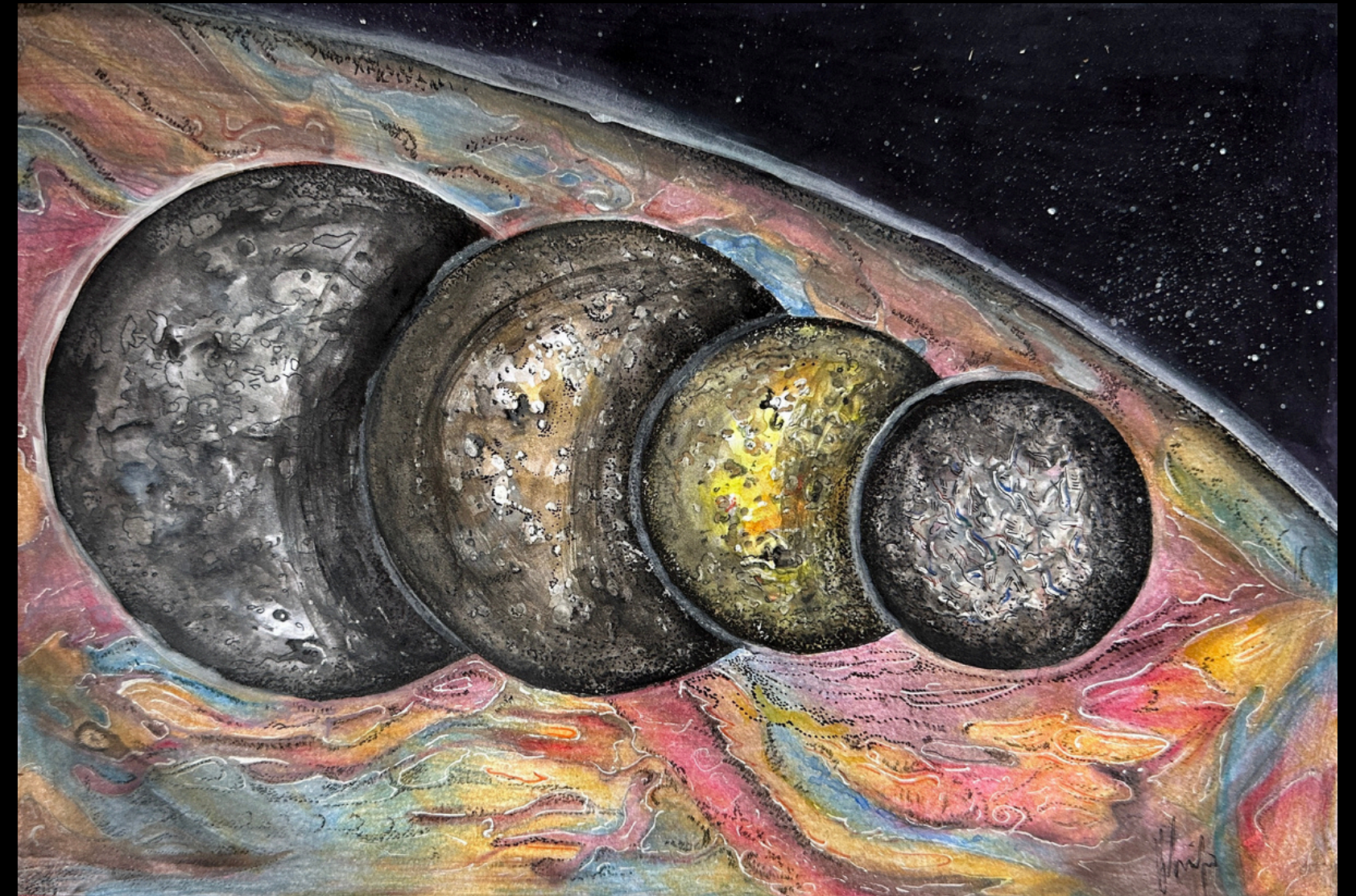
Medium: Pen and Ink, Watercolor

Dimensions: 7" x 10"

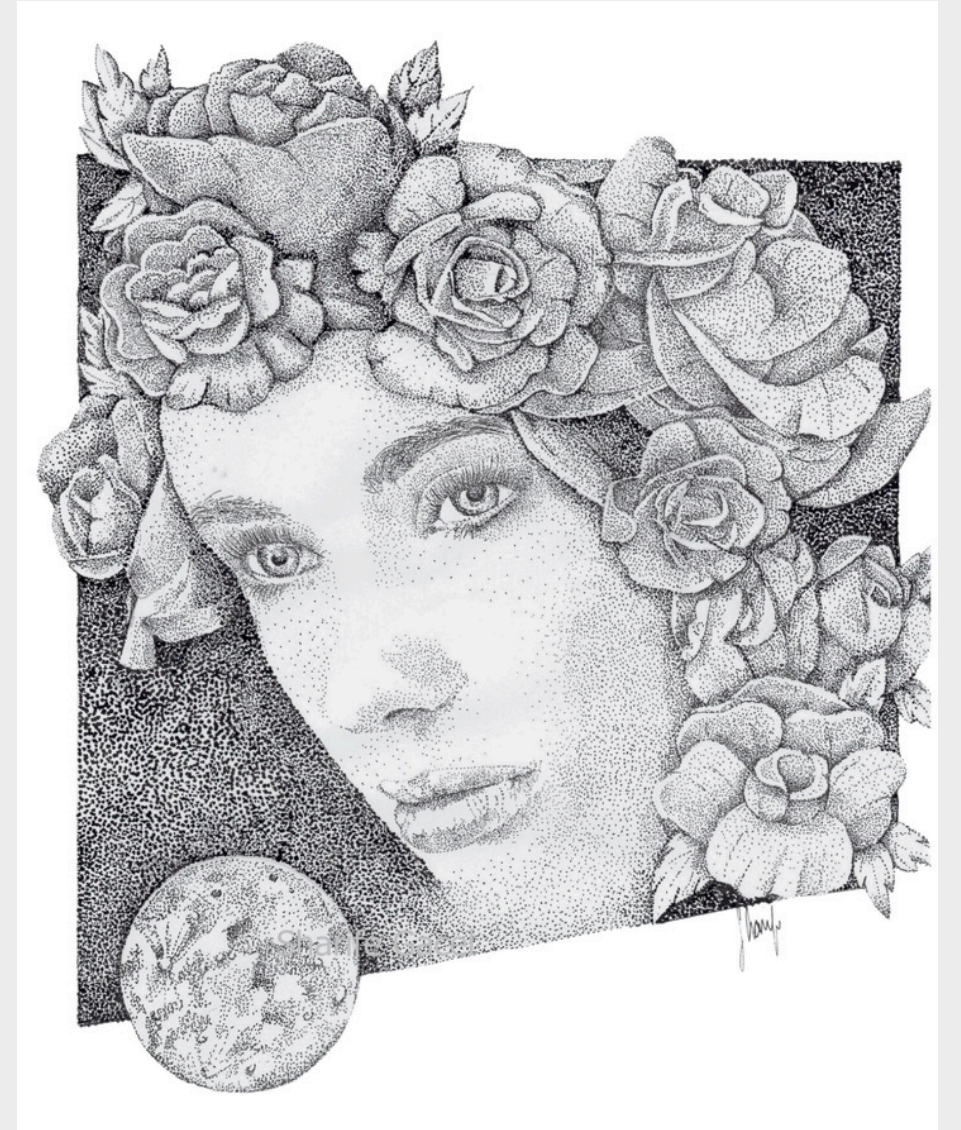
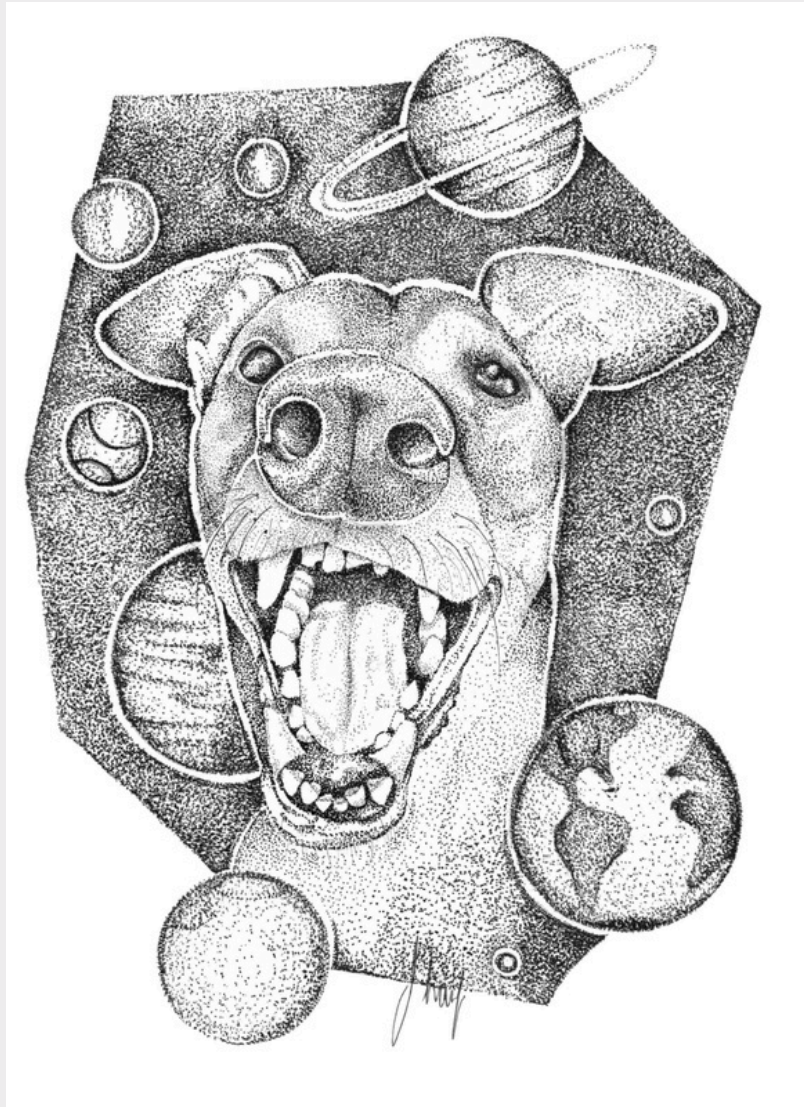
This artwork captures the grandeur of the four Galilean moons—Io, Europa, Ganymede, and Callisto—set against the vibrant backdrop of Jupiter's swirling atmosphere. Each moon is rendered with texture and detail, showcasing their distinct characteristics (from left to right): Ganymede's craggy surface, Callisto's ancient, cratered terrain, Io's volcanic yellows, Europa's icy sheen.

The flowing, colorful patterns of Jupiter evoke its iconic storms and gaseous bands, providing a dynamic, cosmic stage for its orbiting moons. The combination of pen and ink with watercolor brings a tactile depth to the piece, balancing fine detail with the fluidity of the planet's gaseous form.

This piece invites viewers to reflect on the harmony and contrast within the solar system—a meeting of solid moons and an ever-shifting giant. Perfect for astronomy enthusiasts and art lovers alike, Galilean Quartet serves as a vivid tribute to the wonders of celestial exploration.



MYTHOLOGY



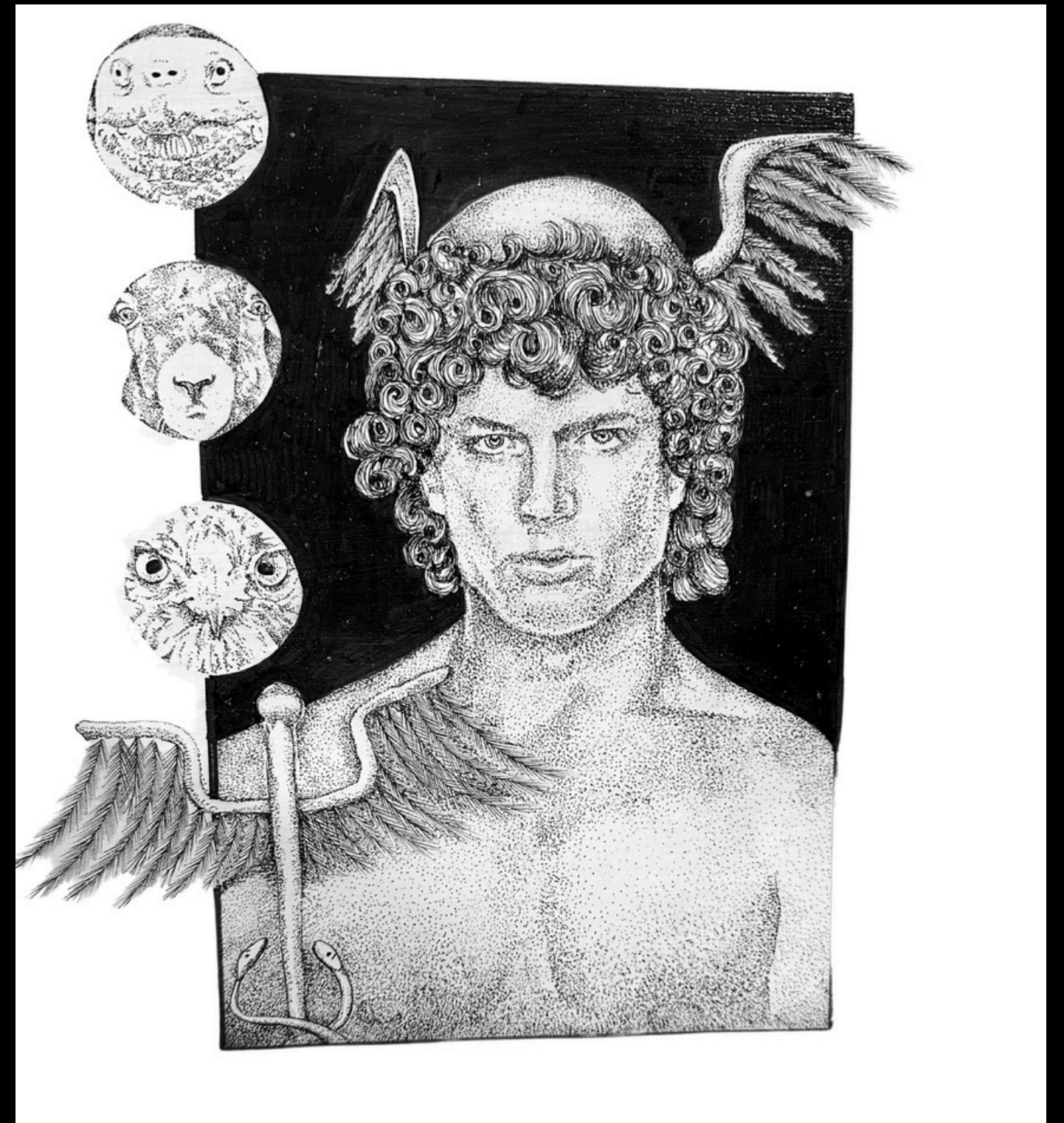
Mercury

Year: 2022

Medium: Pen and Ink

Dimensions: 9x12"

Description: This piece represents Mercury as the Roman god. His expression shows one of cleverness, which was described in literature. He was often shown with wings on his helmet or shoes. His symbols also include a tortoise, ram, and bird. He was also often pictured with a caduceus, that is now seen in modern medicine. The original piece is 9x12", pen and ink, on mixed media paper.



Gaia

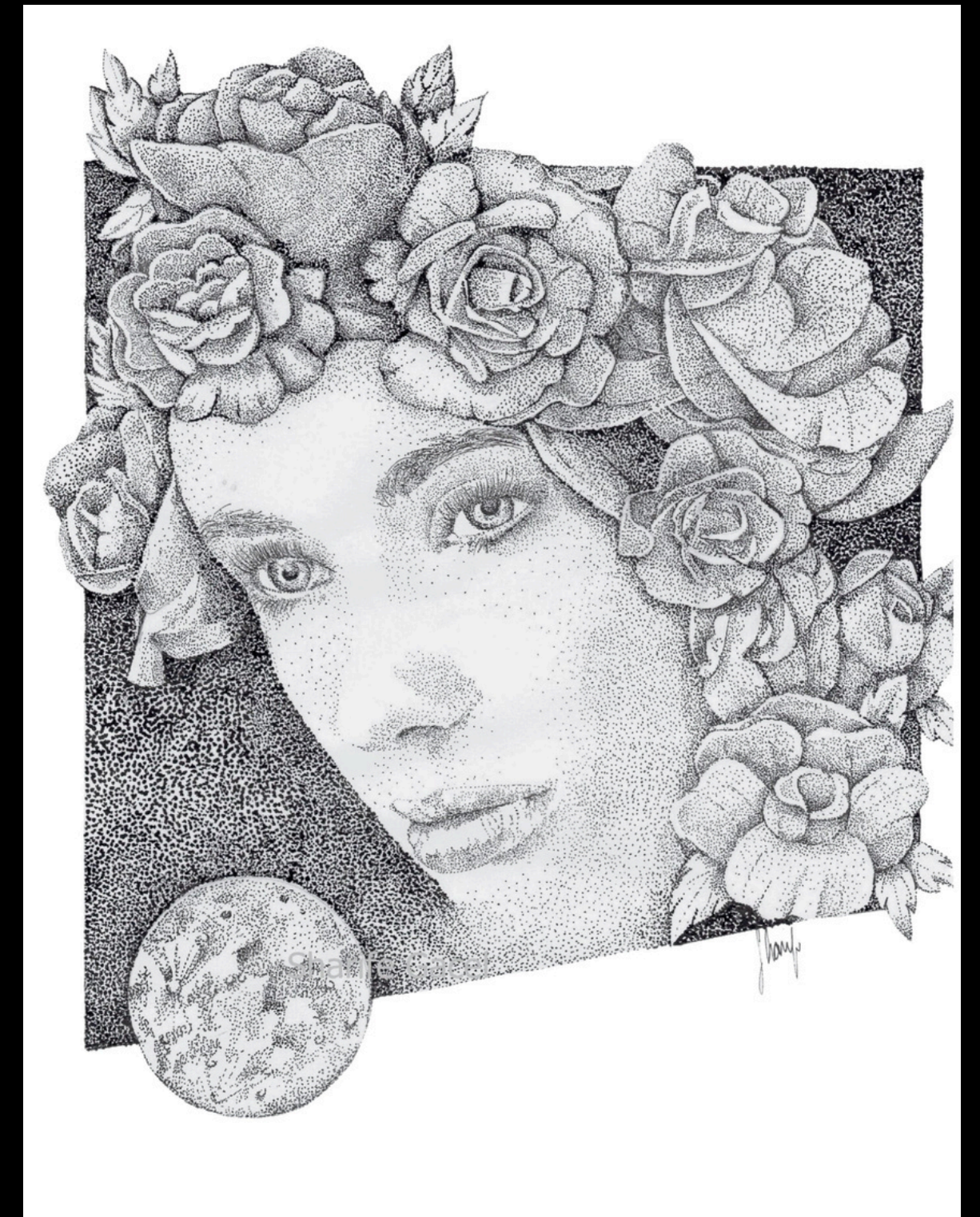
Year: 2022

Medium: Pen and Ink

Dimensions: 9x12"

Description:

This piece shows Earth as our home planet that has a connection with all things living. She is represented as a meek presence, but a force to be reckoned with. Gaia is as soft and kind as she is powerful and unforgiving. This piece was meant to represent a kindness that when we take care of Earth, she takes care of us. In the art, Gaia looks over the Moon as we are in one system. The choice of using a rose as the flower to represent life is because roses are beautiful and strong simultaneously. The original piece is 9x12", pen and ink, on mixed media paper.



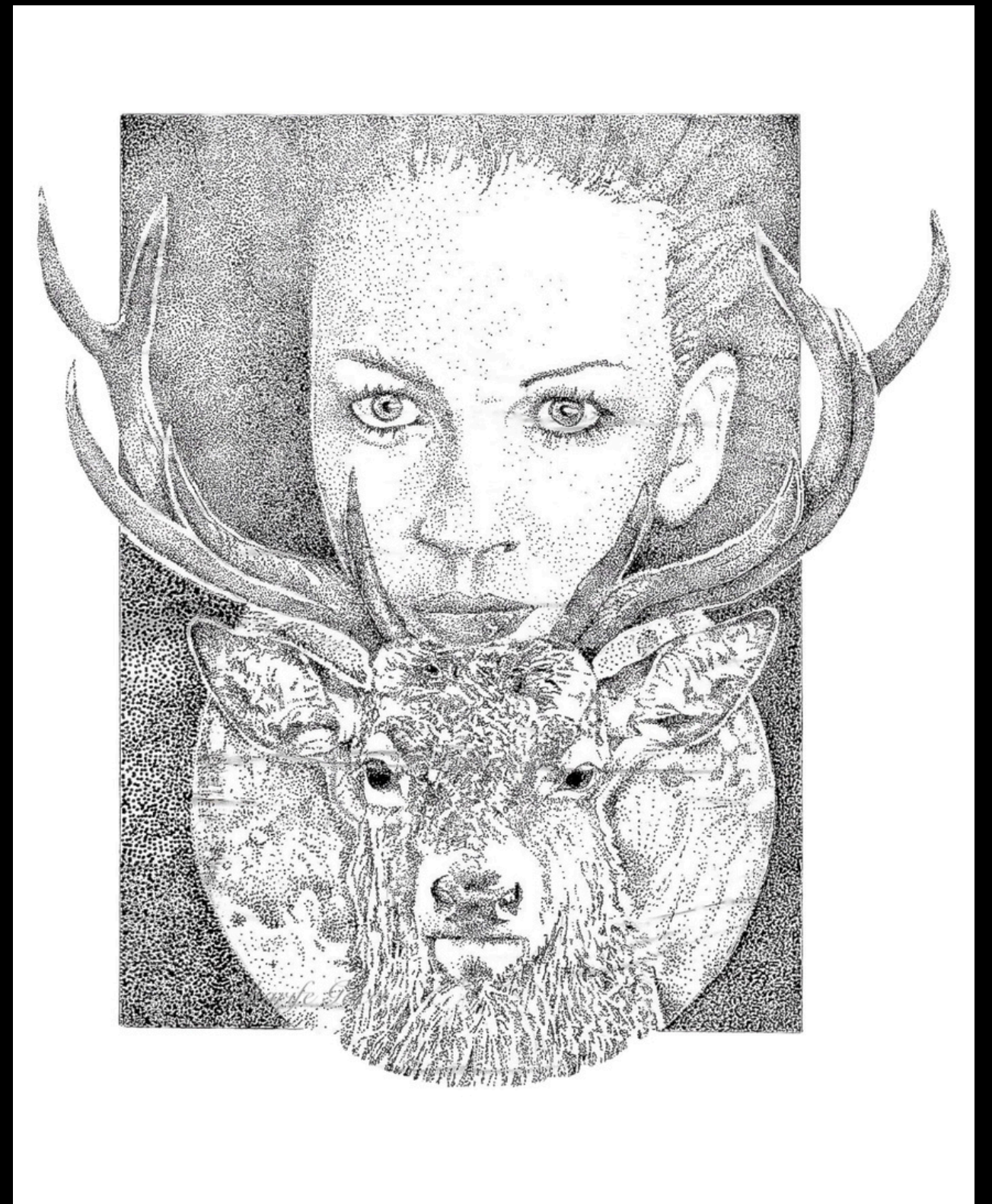
Artemis

Year: 2021

Medium: Pen and Ink

Dimensions: 9x12"

Description: This piece is my interpretation of the goddess Artemis with a stag. She is shown tucked away behind the stag and in front of the Moon as if she's connecting with them. Part of the Moon is astronomically accurate when rotated 90 degrees clockwise. My goal with this piece was to convey a sense of power but calm, beauty with fierceness. In a similar way, our Moon has these qualities, so it made sense to incorporate them into the piece. She was the twin sister of Apollo and like all the Olympic gods, Artemis was immortal. She could transform herself into other animals and had perfect aim with her bow and arrow. The NASA Artemis missions will land the first woman and the first person of color on the Moon. This piece is a tribute to this next giant leap. The original is 9x12", pen and ink, mixed media paper.



Mars

Year: 2024

Medium: Pen and Ink

Dimensions: 9x12"

Description: Mars is known as the Red Planet and is portrayed as the goddess of War in this artistic rendition. In this image, Mars shows both a fierceness and focused expression. Her armor represents military power, unlike her ancient Greek counterpart Ares that symbolized destruction and destabilization. The planet Mars has 2 moons, Phobos and Deimos, which are seen in the background above Mars' head. Mars is also the 4th planet from the Sun and 7th largest in our Solar System. The original piece is 9x12", pen and ink, on mixed media paper.



Neptune

Year: 2024

Medium: Pen and Ink

Dimensions: 9x12"

Description: Neptune is the 8th and most distant planet from the Sun. It's the 4th largest, and first discovered by math. Neptune has 14 named moons, and 16 total moons. This artistic rendition of Neptune in mythology shows her as the Roman goddess of the sea. Her look is one of calm that demands respect, similar to the ocean itself. The original image is 9x12", pen and ink, on mixed media paper.



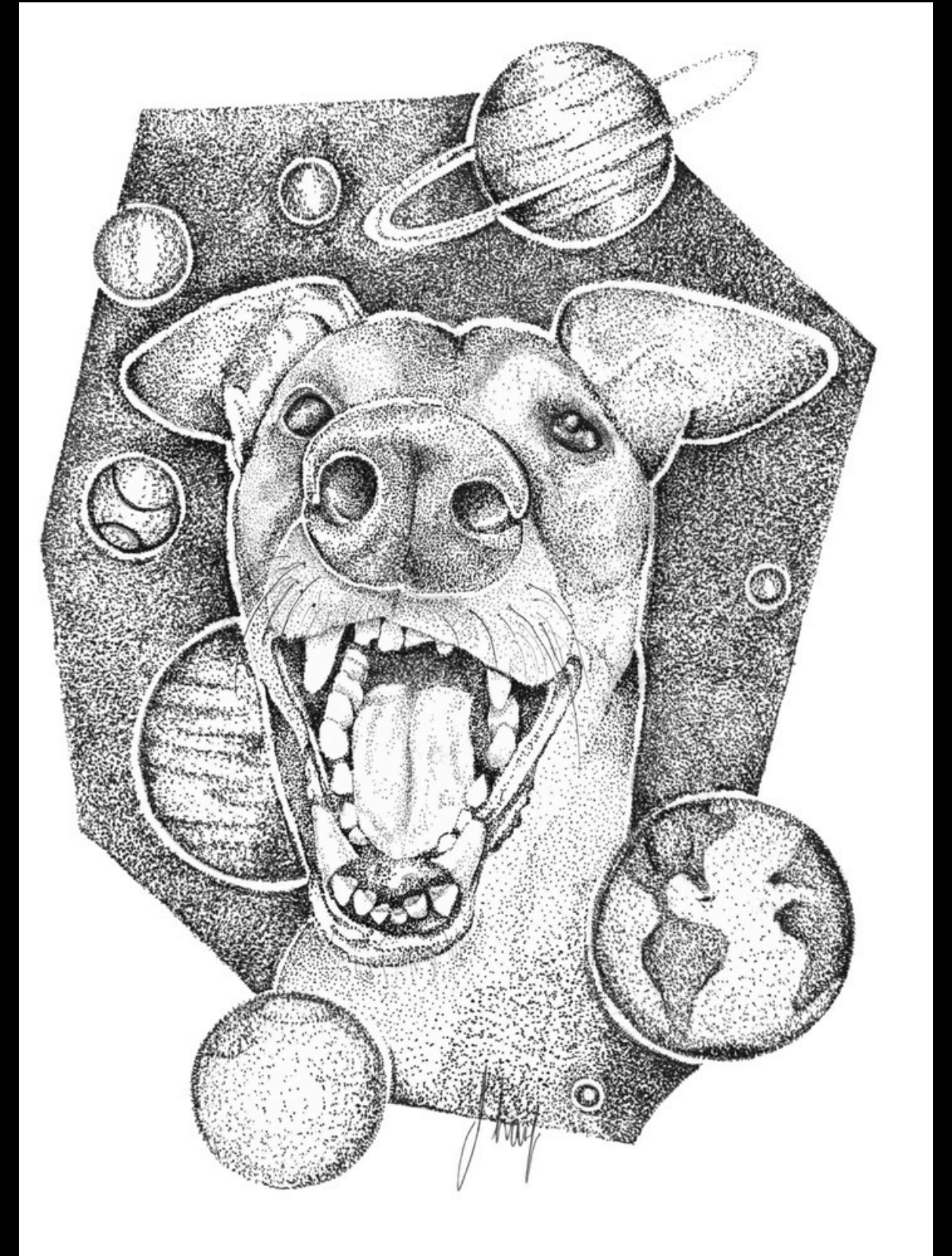
Sirius

Year: 2023

Medium: Pen and Ink

Dimensions: 9x12"

Description: The star, Sirius, was of immense importance in ancient Egyptian times. It was worshipped and offered sacrifices with the intention that they would bring good fortune. For this reason, the image is depicted with my greyhound, Anubis representing the main star, Sirius A. Also known as the heavenly wolf, which seemed appropriate since he passed away in May 2022. Sirius is brightly visible with the naked eye from Earth. For this reason, I chose to include our Solar System in the art piece. As a fun bonus, one of the planets is depicted as a tennis ball. The original piece is 9x12", pen and ink, mixed media paper.



Andromeda

Year: 2024

Medium: Oil on Canvas

Dimensions: 9x12"

Description: This piece was inspired by the Andromeda goddess found in mythology as well as the galaxy itself. The andromeda constellation is shown to the left of the art with the main stars in the constellation shown prominently. The feel of the piece was intended to be one of subtle power. Because the mythology showed the princess to be chained at a seashore, I wanted to incorporate chains in the drawing, but in a more empowering way. She has seemingly taken the chain that held her down and is using it as her armor. Symbolically we can all eventually transform our obstacles into strengths. Towards the back of the piece, the Milky Way is shown as it neighbors the constellation. The circle indicated in this represents Earth. The original piece is 9x12", pen and ink, on mixed media paper.



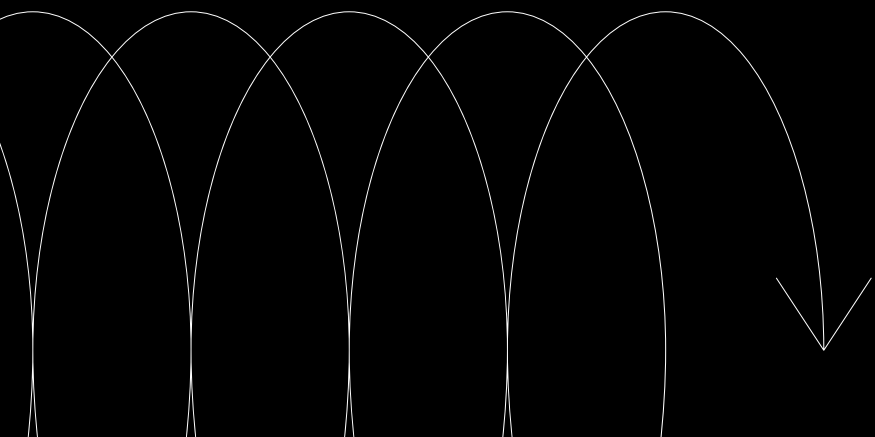
Eris

Year: 2021

Medium: Oil on Canvas

Dimensions: 9x12"

Description: Eris is the most massive and second-largest known dwarf planet in the Solar System. It is a trans-Neptunian object in the scattered disk and has a high-eccentricity orbit. Because the dwarf planet was initially Xena, I decided to use Xena's face as reference for this piece. Eris has 1 moon, Dysnomia. She is looking out to the Moon, Dysnomia. Since Eris was the start of the big debate over the definition of "planet", it made sense to depict her as the warrior princess. The original piece is 9x12", pen and ink, on mixed media paper.



Dysnomia

Year: 2021

Medium: Pen and Ink

Dimensions: 9x12"

Description: Dysnomia is the moon of the dwarf planet, Eris. It is likely the second-largest known moon of a dwarf planet, second to Pluto's Charon. As a plan on the Eris piece, I depicted Dysnomia as Gabrielle. In the piece, you can see Dysnomia looking out to her planet, Eris. The two pieces play off of one another in a comical way for any Xena Warrior Princess fans. It was important to create this duo as they sparked controversy about the definition of what a planet is. The original piece is a 9x12", pen and ink, on mixed media paper.



Hera

Year: 2025

Medium: Pen and Ink

Dimensions: 7x10"

Description: This artwork blends Greek mythology with space. Her face, framed by a Corinthian-style helmet, is meant to symbolize wisdom and protection of the apple blossoms drawn in the middle. In mythology she had received these golden apples as a gift for her wedding to Zeus, and they were eventually placed in the garden of the Hesperides. Also coiled around her is Ladon, the dragon entrusted to guard the golden apples. The drawing is meant to capture Hera in the cosmos as a humble force to be reckoned with.



Horsehead Nebula

Year: 2025

Medium: Mixed Media

Dimensions: 9x12"

Description: This piece is a reimagining of the Horsehead Nebula, inspired by an astrophotography image captured of the nebula. Located 1,375 light-years away in the Orion Molecular Cloud Complex, the Horsehead Nebula is a dark nebula, its iconic silhouette formed by dense cosmic dust blocking the glowing hydrogen gas behind it. The red background in this piece reflects the real nebula's illumination by Sigma Orionis, a bright star system nearby. The intricate ink work of the horse's head emerges from the nebular glow, symbolizing the connection between astronomical wonders and earthly creatures. The surrounding cosmic dust and delicate botanical elements enhance the dreamlike atmosphere, much like the real nebula, which serves as a stellar nursery, giving birth to new stars. Through this fusion of art and astronomy, the piece captures both the mystery and majesty of deep space



Rosette Nebula

Year: 2025

Medium: Mixed Media

Dimensions: 9x12"

Description: This piece is a celestial interpretation of the Rosette Nebula, blending the delicate beauty of roses with the vastness of space. Inspired by the nebula's intricate structure, the artwork transforms its swirling clouds of gas and dust into blooming petals, symbolizing the life-giving nature of cosmic formations. Located about 5,200 light-years away in the constellation Monoceros, the Rosette Nebula is a vast stellar nursery, where young, hot stars carve out its luminous shape. The soft glow surrounding the flowers echoes the nebula's ionized hydrogen, illuminated by a cluster of newborn stars at its center. Through this fusion of nature and astronomy, the piece captures the awe-inspiring connection between life on Earth and the processes that shape the universe.



Stay in Touch.



Address

P.O. Box 195185
Winter Springs, FL 32719

Email

sgacel@gmail.com

Website

www.thespacetherapist.com